

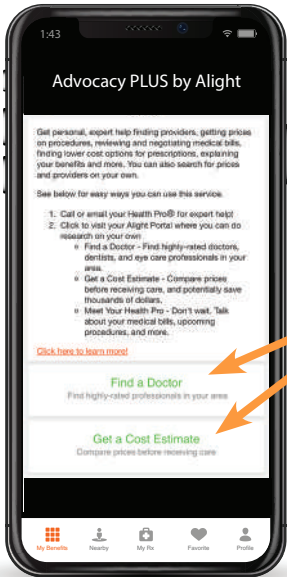
App & Portal: 7 Fresh Features in your App and Portal



1 Helper tool

Find your freshbenies fix faster!

This tool will help you find the right service for your situation. Just **click** the "I can help you find the right service!" button to launch the tool.



2 Automatic login

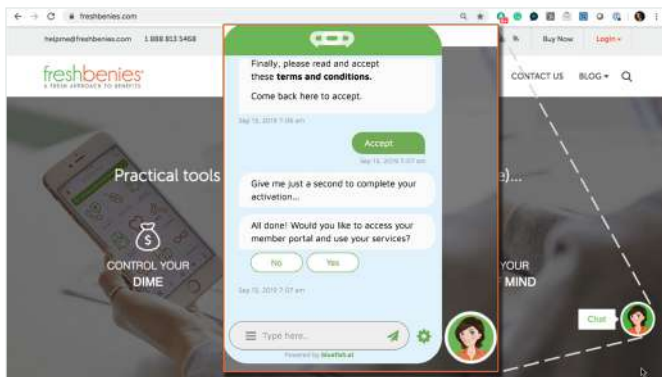
After you log into your freshbenies app or portal, you'll be automatically logged in with most other service providers in your membership - no additional logins required. Your dependents have this same easy access.

3 Shake to call

Who has time to search for pesky phone numbers?

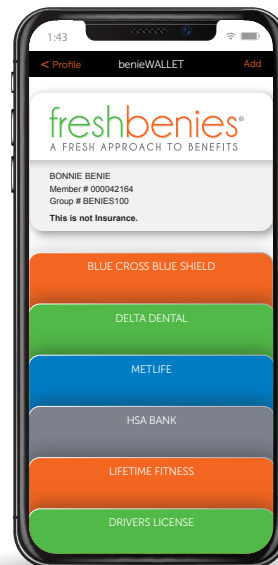
With this cool feature, just go to the service you want to call and **shake** it (like a Polaroid picture)!





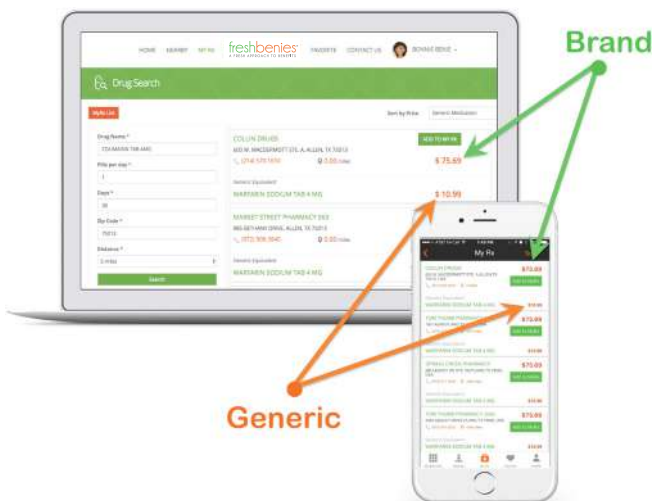
4 AI Assistant

Have a question about your benies? Chat with Bonnie for on-the-spot help – activation, member details and more.



5 benieWALLET

Store and access all your cards in one, easy place - insurance, pharmacy, fitness clubs, passport and more! Customize your benieWALLET to hold your important documents when you're on the go. PLUS, we've pre-loaded your virtual freshbenies card :-)



6 Save on your Rx

There are 2 ways to save. Click the Prescription Savings icon in your app or portal.

- 1) **Your local pharmacy** Search local Rx pricing on branded and generic drugs. Save 10% to 85% (an average 46%). You can save and recheck pricing to always find the best deal.
- 2) **Mail order pharmacy** Search mail order Rx pricing and save 10% to 85% on prescription medications with free standard shipping.

You might be surprised how much drug prices vary – the **freshbenies** price could even beat your insurance!

7 Manage Dependents

View, add and manage your dependents under your Profile - no need to add or set up family members for each service!

Dependents over 18 will create their own login and use freshbenies in their own app and portal.

Manage Dependents						
Group ID: BENIES132791		Member ID: 116294812				
Phone: 316-973-2539		Email: bonnie@freshbenies.com				
Dependent Information						
#	Relationship	First Name	Last Name	Email	Birth Date	Current Status
1	Minor Dependent	Brandi	Benie		10-02-2019	Active
2	Minor Dependent	Beau	Benie		09-15-2015	Active
3	Minor Dependent	Becca	Benie		04-08-2011	Active
4	Spouse	Brad	Benie		11-17-1985	Active
<p>Instructions</p> <ul style="list-style-type: none"> Minor Dependents (under 18): newly added Minor Dependents will be processed in about an hour, then automatically activated and can use the services. Adult Dependents (ages 18+): newly added Adult Dependents will be processed in about an hour, then will receive an email invite to activate their membership and use the services. To add a non-spouse IRS dependent who is over 26, please call Member Services at 855-647-6762. 						